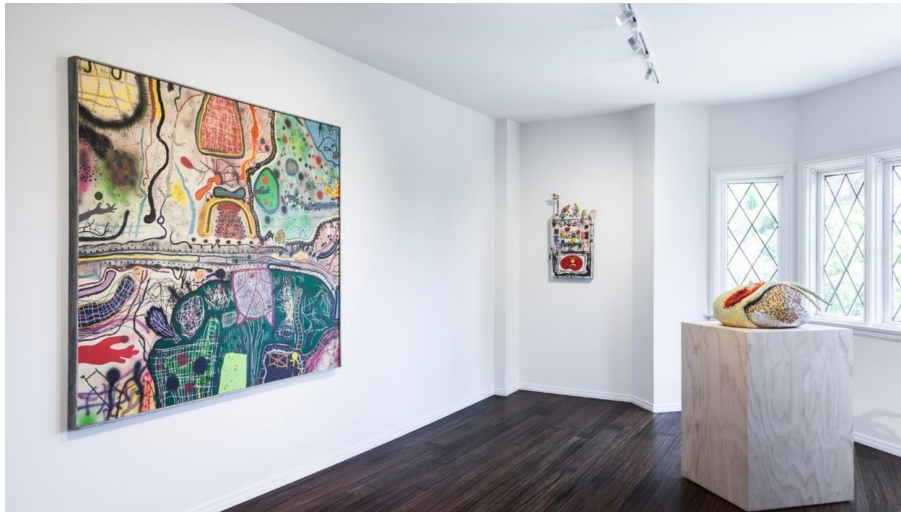




Dilexi Gallery: Disparate Ontologies
"Art from San Francisco's famed Dilexi Gallery comes to LA"
by Steve Chiotakis
24 July 2019



Dilexi Gallery: Seeking the Unknown runs until August 10th, 2019 at the Parker Gallery.
Photo courtesy of Parker Gallery

The late 1950s to the end of the 1960s saw a huge cultural transformation in California. The buttoned-down 50s and its post-war prosperity gave way to the assassinations of JFK and MLK, Vietnam war protests, acid trips, and the Summer of Love.

The Dilexi Gallery, an influential art gallery in San Francisco, was a product of the time. From 1958 to 1969, it showed works from a whole new crop of modern artists.

This summer, six galleries (four in LA and two in San Francisco) are hosting a retrospective of work that once appeared in the Dilexi Gallery.

Here's where you can check it out:

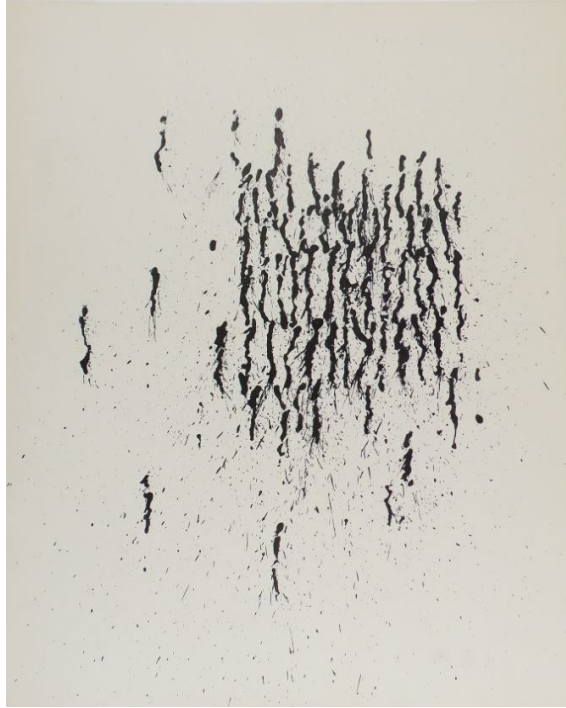
- Parker Gallery, 2441 Glendower Ave, Los Angeles, CA 90027
- The Landing Gallery, 5118 W Jefferson Blvd, Los Angeles, CA 90016
- Parrasch Heijnen Gallery, 1326 S Boyle Ave, Los Angeles, CA 90023
- Marc Selwyn Fine Art, 9953 S Santa Monica Blvd, Beverly Hills, CA 90212



Dilexi Gallery: Disparate Ontologies runs until August 10th, 2019 at the Landing Gallery.
Photo courtesy of the Landing Gallery



DILEXI: Totems and Phenomenology runs until August 10th, 2019 at the Parrasch Heijnen Gallery.
Photo courtesy of the Parrasch Heijnen Gallery



Jay DeFeo: The Language of Gesture Craig Kauffman: Drawings from 1958-9 runs until August 10th, 2019 at Marc Selwyn Fine Art.
Photo courtesy of Marc Selwyn Fine Art